

# A SMOOTH ENDODONTIC PROCEDURE

## COURSE OUTLINE

### HANDS-ON (1 PLASTIC MOLAR/FEW EXTRACTED MOLARS)

- **Access cavity preparation and orifice location:** To improve the accuracy without removing additional tooth structure
- **Cleaning and shaping:** To obtain glide path; enlarge the canal efficiently with rotary instruments (**EdgeEndo X7 rotary file systems**), while avoiding iatrogenic errors
- **Irrigation:** To optimize irrigant/activation techniques and protocols for effective debridement
- **Obturation** and coronal restoration: To achieve 3D seal of the root canal system with ideal materials **and hydraulic condensation technique with bio-ceramic sealer** to prevent re-infection

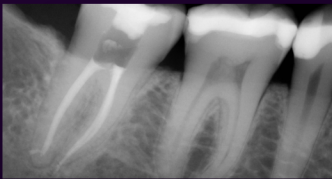
### DIDACTIC (40% OF COURSE)

- **Introduction:** The fundamental steps in roots canal treatment as listed above
- **Case selection:** To identify the risks for procedural errors and preventions
- **Pain management:** To provide adequate medications, comfortable treatment and post-treatment management

## ABOUT DR. ALICE LI

Dr. Alice Li currently works as an associate at Davisville Endodontics and Toronto Dental Specialists. She also holds the positions of adjunct professor and clinical instructor at the University of Toronto, Faculty of Dentistry.

Dr. Li obtained her Ph.D. and M.Sc. (Endodontics) from the University of Toronto. During the period of her Ph.D. and M.Sc. in Toronto, Dr. Li worked on researches of improving the biomechanical properties and fatigue resistance of endodontically treated dentin using engineered bioactive nanoparticles; and developing a 3D organoid model to study the cell signaling mechanism associated with regenerative endodontics. She has published many articles in peer-reviewed journals and received numerous international and national awards in the field of endodontics from the American Association of Endodontists, Journal of Endodontics and the Canadian Association for Dental Research. Dr. Li continues her award-winning research and clinical teaching at the University of Toronto Faculty of Dentistry, serves as a scientific advisory board member of peer-reviewed journals, as well as enjoys being an endodontist working in Toronto.



EDGEENDO®



HENRY SCHEIN®



THE INSTITUTE FOR  
DENTAL EXCELLENCE INC.  
T.I.D.E.



**DR. ALICE (FANG-CHI) LI**

D.D.S., M.SC. (ENDODONTICS),  
PH.D., FRCD(C)

## LOCATION

**TORONTO, ON**

## COURSE DATE

**MARCH 8, 2024**

9AM - 5PM EST

## EARLY BIRD SPECIAL

~~\$499 + TAX~~

**\$449 + TAX**

DISCOUNT OF \$50 UNTIL

**FEBRUARY 15, 2024**



1-844-394-3317



ADMIN@TIDEINC.CA



TIDEINC.CA



The Institute for Dental Excellence is designated as an Approved PACE Program Provider by the Academy of General Dentistry. The formal continuing education programs of this program provider are accepted by AGD for Fellowship, Mastership and membership maintenance credit. Approval does not imply acceptance by a state or provincial board of dentistry or AGD endorsement. The current term of approval extends from 5/1/2021 to 4/30/2024. Provider ID# 217983

\*\*Please note that dates are subject to change\*\*